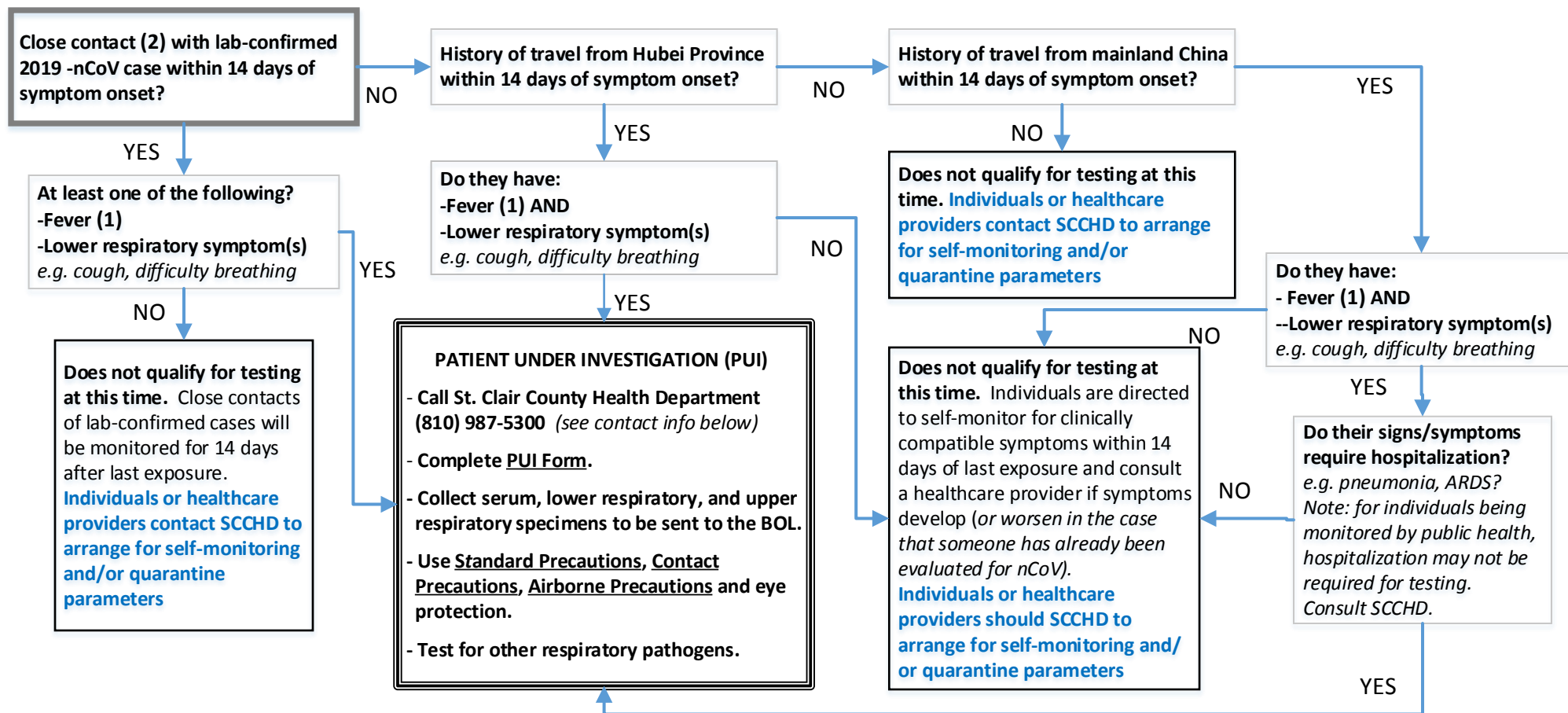


Evaluation of Patients Under Investigation (PUI) for 2019-nCoV



(1) Fever may be subjective or confirmed. (2) Close contact is defined as; a) being within approximately 6 feet (2 meters), or within the room or care area, of a nCoV case for a prolonged period of time while not wearing recommended personal protective equipment or PPE (e.g. gowns, gloves, NIOSH-certified disposable N95 respirator, eye protection); close contact can include caring for, living with, visiting, or sharing a health care waiting area or room with a nCoV case –or– b) having direct contact with infectious secretions of a nCoV case (e.g., being coughed on) while not wearing recommended personal protective equipment.

----- CONTACT -----



St. Clair County Health Department – Preventive Health and Immunizations: (810) 987-5300

current as of: 2/6/2020

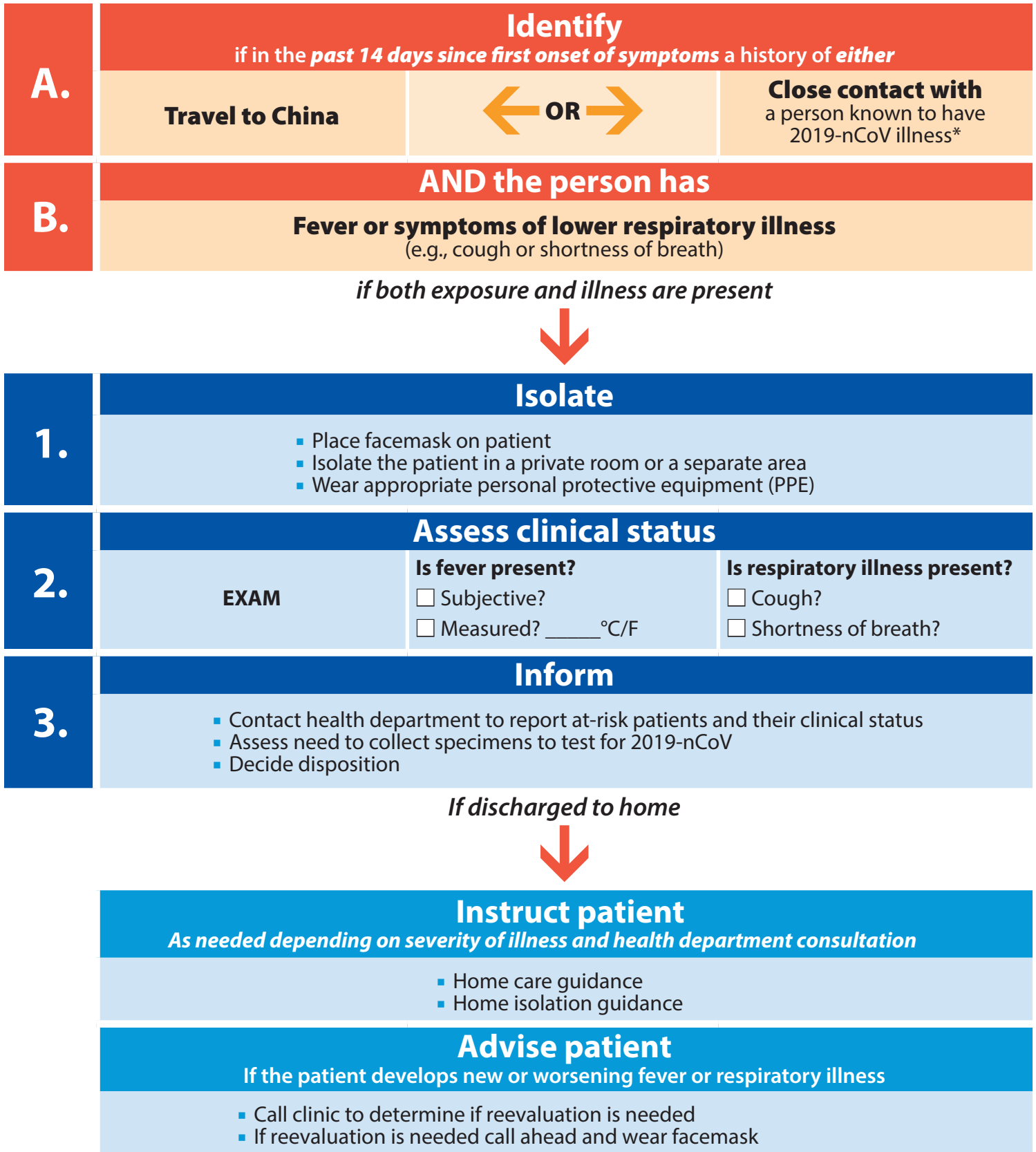
-or- After-hours refer to your office’s SCCHD Routine and After-Hours Emergency Contact List

-or- St. Clair County Central Dispatch: (810) 985-8115 and the call is forwarded to a SCCHD official

Our Community. Our Environment.

Flowchart to Identify and Assess 2019 Novel Coronavirus

For the evaluation of patients who may be ill with or who may have been exposed to 2019 Novel Coronavirus (2019-nCoV)



* Documentation of laboratory-confirmation of 2019-nCoV may not be possible for travelers or persons caring for patients in other countries. For more clarification on the definition for close contact see CDC's Interim Guidance for Healthcare Professionals: www.cdc.gov/coronavirus/2019-nCoV/hcp/clinical-criteria.html