

Figure 1

H2S Monitoring Locations

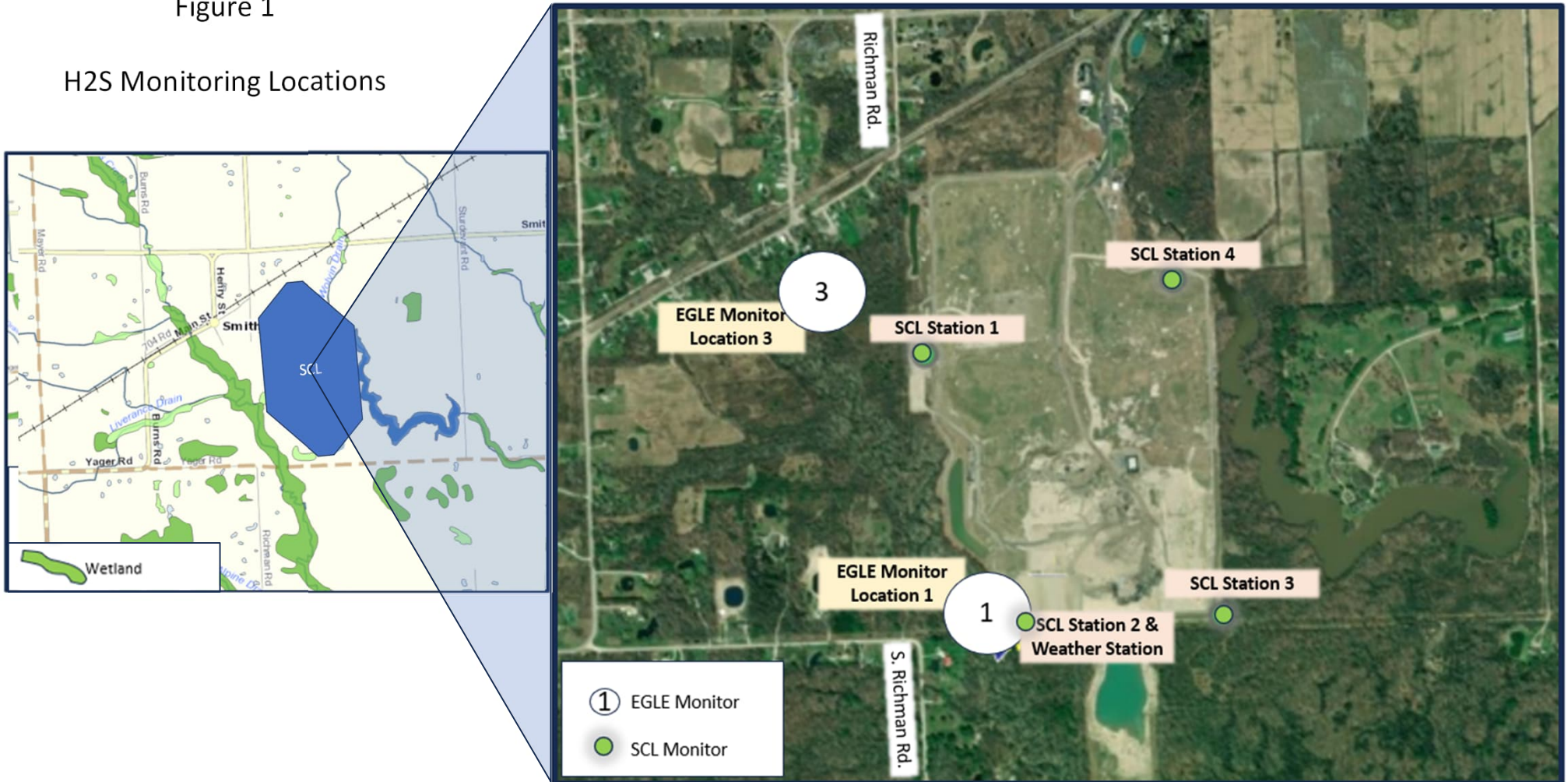


Figure 2
H2S Measurements, March 14, 2022

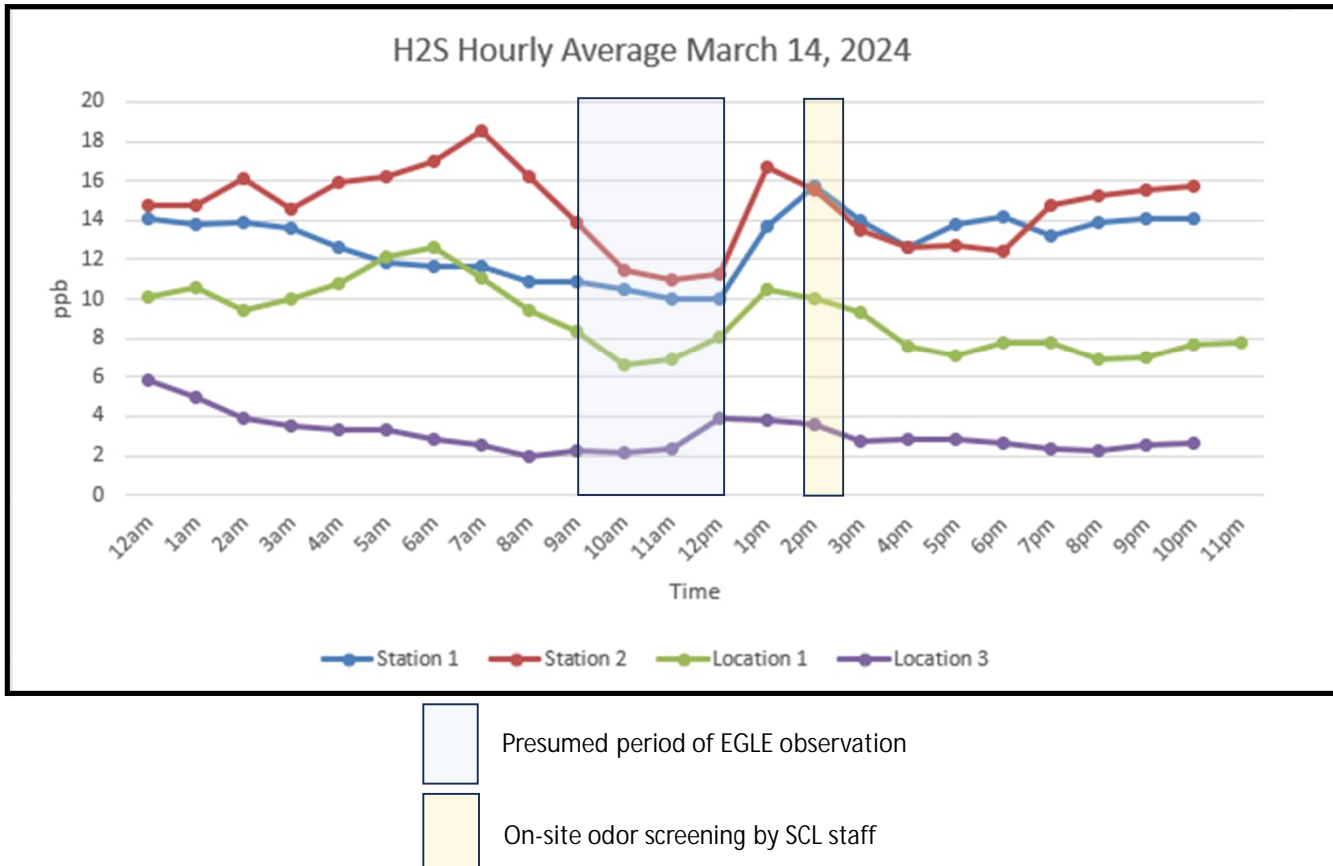
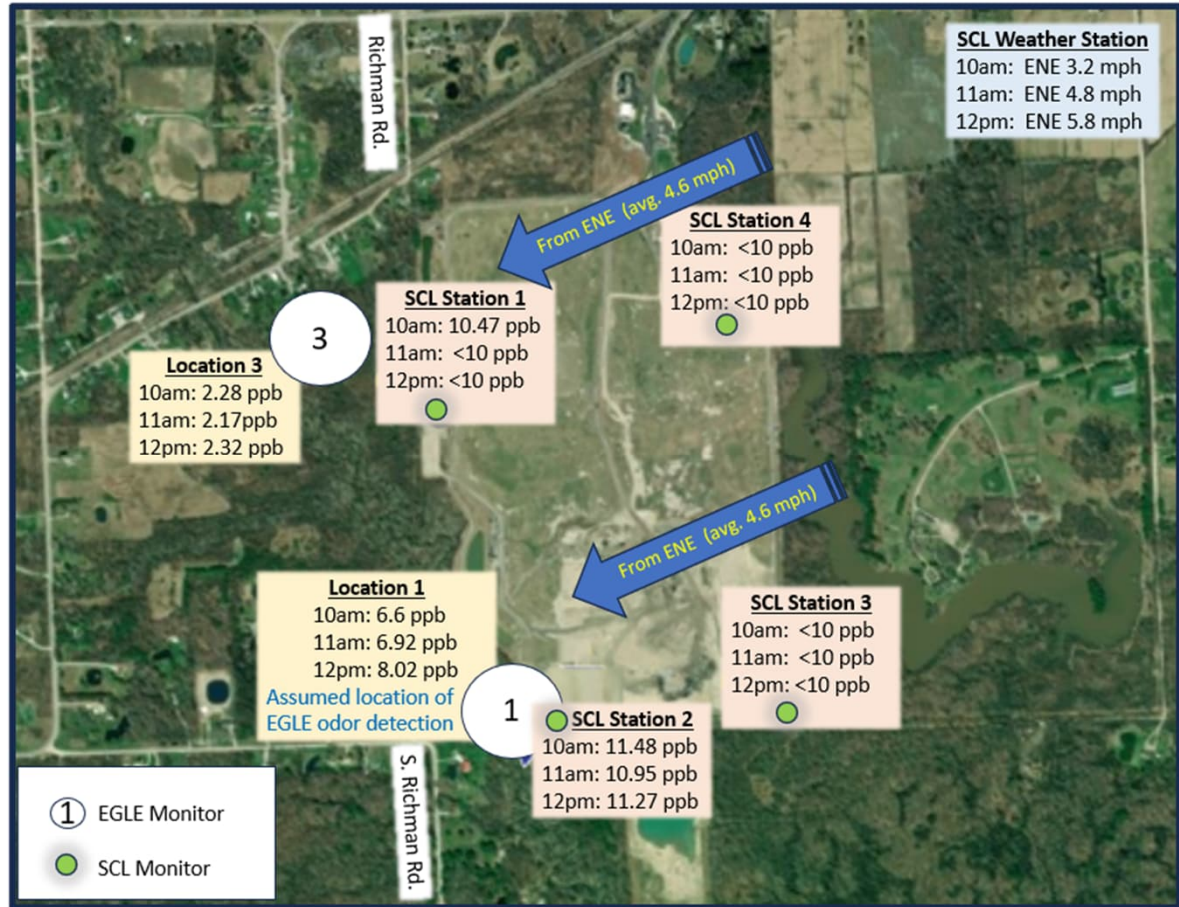
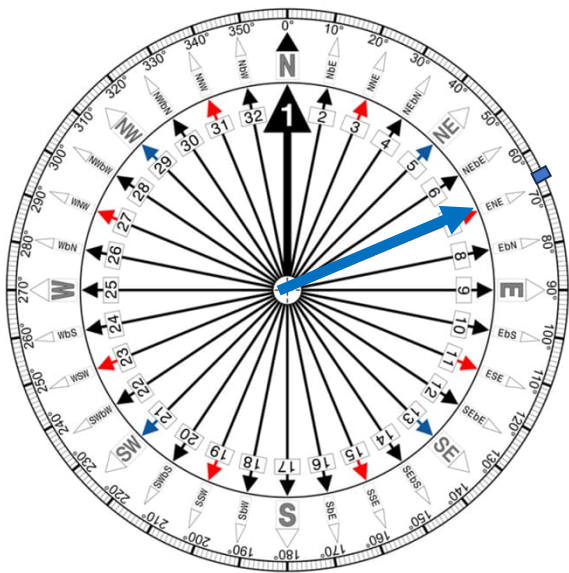


Figure 3

Off-Site Odor Survey
March 14, 2024

Assumed: 10:00am – 12:00pm

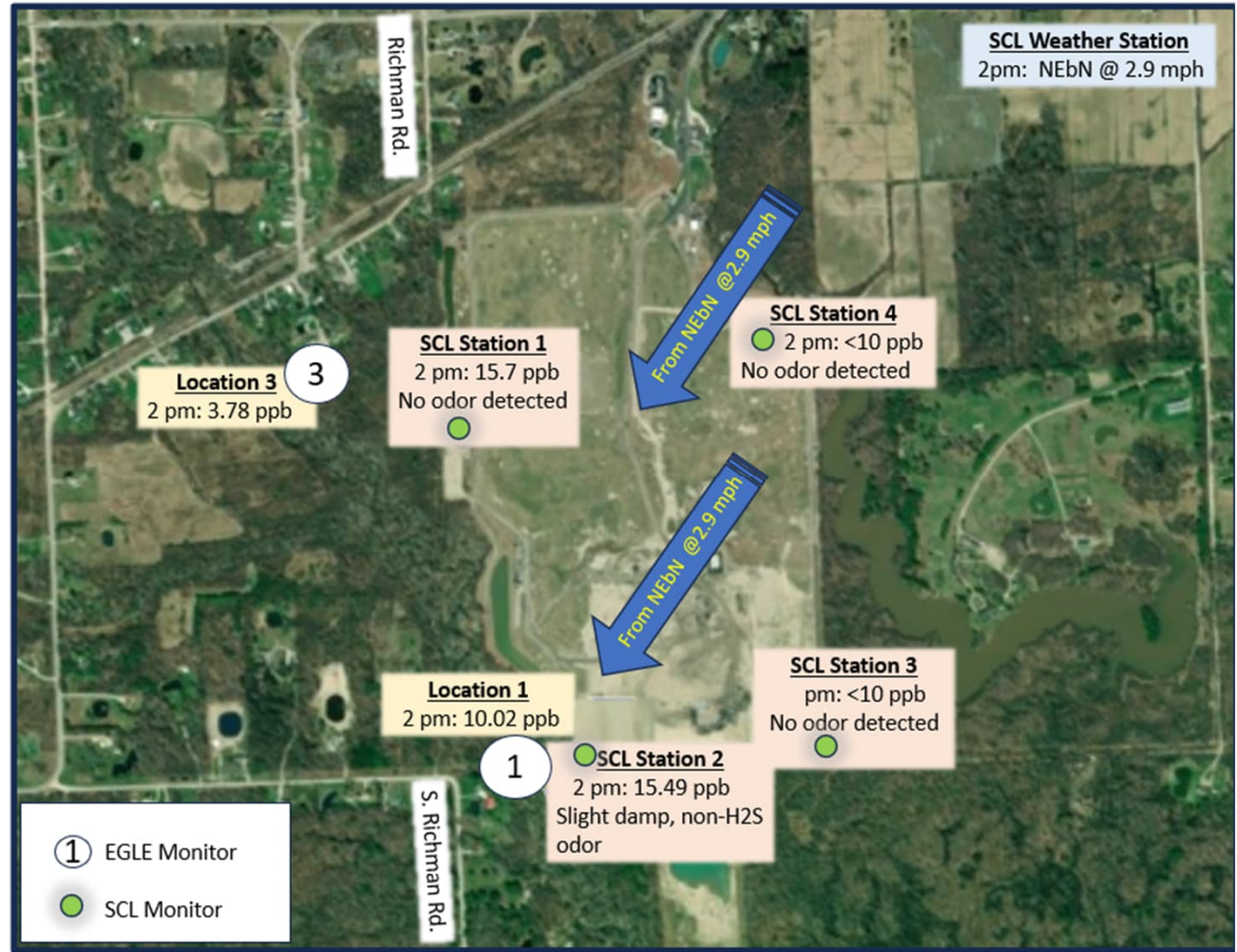
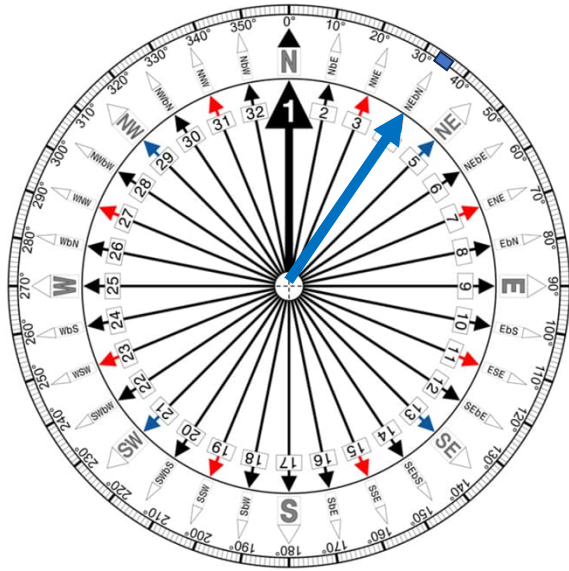


Date / Time	Envea Monitors (ppb) Hourly Average				Hourly Wind Speed (MPH)	Hourly Wind Direction (Compass)	Hourly Wind Direction (Degrees)	EGLE Monitors Hourly H2S Average (ppb)	
	Station 1	Station 2	Station 3	Station 4				Location 1	Location 3
3/14/2024 10am	10.47	11.48	<10	<10	3.2	ENE	66	6.6	2.28
3/14/2024 11am	<10	10.95	<10	<10	4.8	ENE	64	6.92	2.17
3/14/2024 12pm	<10	11.27	<10	<10	5.8	ENE	64	8.02	2.32

Figure 4

SCL On-Site Odor Survey

March 14, 2024, 2:15 pm



Date / Time		Envea Monitors (ppb)				Hourly Wind Speed (MPH)	Hourly Wind Direction (Compass)	Hourly Wind Direction (Degrees)	EGLE Monitors	
		Hourly Average							Hourly H2S Average (ppb)	
		Station 1	Station 2	Station 3	Station 4				Location 1	Location 3
3/14/2024	2pm	15.7	15.49	<10	<10	2.9	NEbN	33	10.02	3.78