

What are the signs and symptoms of a scabies infestation?

- Extreme itching, especially at night.
- Pimple-like itchy rash.
- Common sites such as: wrist, elbow, armpit, webbing between fingers and toes, nipple, breast, penis, waist, belt-line, knee, shoulder blades and buttocks.
- Scratching the rash can cause sores.
- Tiny burrows sometimes are seen on the skin; these are caused by the female scabies mite tunneling just beneath the surface of the skin. These may appear as tiny raised and crooked, grayish-white or skin-colored lines on the skin surface.

How did I get scabies?

Scabies is found worldwide and is very contagious. Some common places where infestations happen: nursing homes, extended care facilities, prisons, and childcare sites.

- Direct prolonged, skin-to-skin contact with a person who has scabies.
- A quick handshake or hug usually will not spread scabies.
- Scabies is spread easily to sexual partners and household members.
- Scabies sometimes is spread indirectly by sharing articles like: clothing, towels, or bedding used by an infested person.

St. Clair County Health Department

3415 28th Street
Port Huron, MI 48060
810-987-5300

Teen Health Center
2215 Court Street
Port Huron, MI 48060
810-987-1311

Stay informed!
www.scchealth.co

Like us on
Facebook.com/scchdmi
[Twitter.com@scchdmi](https://twitter.com/scchdmi)

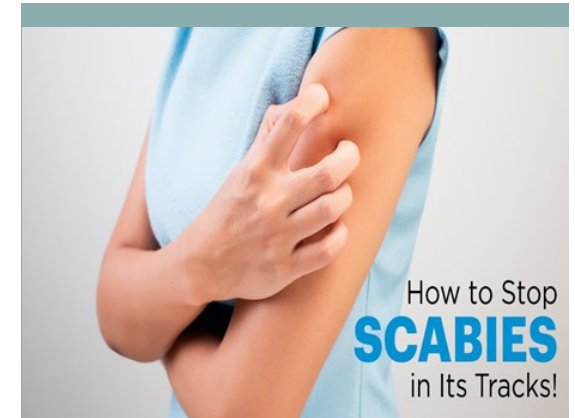


For more information on scabies go to:
<http://www.stclaircounty.org/offices/health/scabies.aspx>



www.scchealth.co | [f/scchdmi](https://facebook.com/scchdmi) | [@scchdmi](https://twitter.com/scchdmi)

SCCH:CMC:rb 2017 S:1NSG SUP:CD\Scabies Bro



How to Stop
SCABIES
in Its Tracks!



SCABIES



ST. CLAIR COUNTY HEALTH
DEPARTMENT

What is scabies?

- Infection of the skin
- Caused by human itch mite
- Mite burrows into upper layer of skin
- Extreme itching
- Pimple-like skin rash

What is crusted (Norwegian) scabies?

- Severe form of scabies
- Thick crusts of skin
- Very contagious
- May not show usual signs and symptoms like rash or itching

How soon after infestation do symptoms of scabies begin?

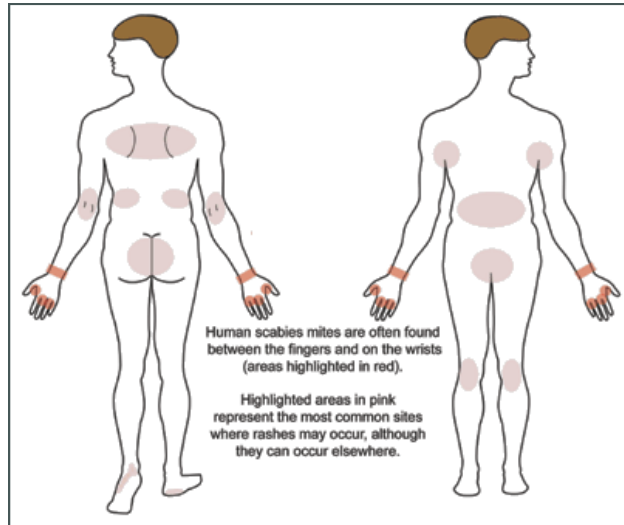
If a person has never had scabies before, symptoms may take as long as 4-6 weeks to begin. It is important to remember that an infested person can spread scabies during this time, even if he/she does not have symptoms yet.

In a person who has had scabies before, symptoms usually appear much sooner (1 to 4 days) after exposure.



How is scabies infestation diagnosed?

- Examining the rash and looking for mite burrows (tunnels) forming a line on the skin.
- A skin scrape can be done and examined under a microscope for mites, eggs, or mite fecal matter.
- It is important to remember that a person can still be infested even if mites, eggs, or fecal matter cannot be found; typically fewer than 10-15 mites can be present on the entire body of an infested person who is otherwise healthy.
- Persons with crusted scabies can be infested with thousands of mites and should be considered highly contagious.



Picture from www.cdc.gov

Can scabies be treated?

Yes. Medicine to treat human scabies is available only with a doctor's prescription; there are **NO** "over-the-counter" or (non-prescription) products that have been tested and approved for humans.



- Always carefully follow the instructions provided by the doctor or pharmacist, as well as those contained in the box or printed on the label.
- When treating adults and older children, scabicide cream or lotion is applied to all areas of the body from the neck down to the feet and toes; when treating infants and young children, the cream or lotion also is applied to the head and neck.
- The medication should be left on the body for the recommended time before it is washed off.
- Clean clothes should be worn after treatment.
- In addition to the infested person, treatment is recommended for household members and sexual contacts.
- All persons should be treated at the same time in order to prevent re-infestation.
- Retreatment may be necessary if itching continues more than 2-4 weeks after treatment or if new burrows or rash appears.

NEVER USE A MEDICINE INTENDED FOR VETERINARY OR AGRICULTURAL USE TO TREAT HUMANS!