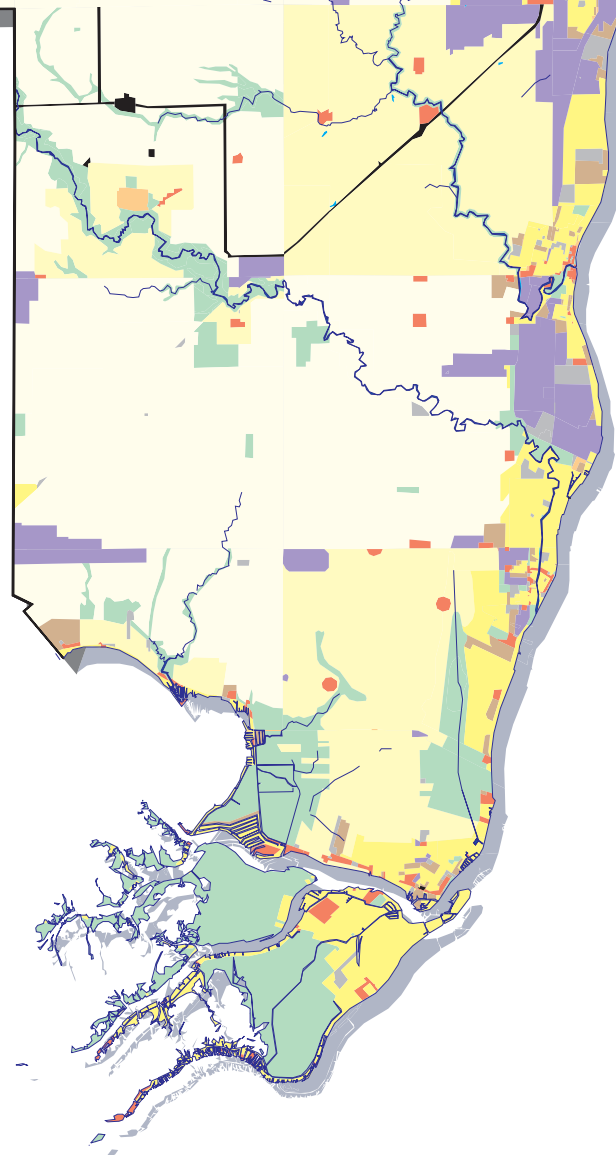


Generalized Master Plans

-  Surface Water
-  Transportation, Communications & Utility
-  Industrial, Warehouse, & Light Manufacturing
-  Business & Commercial
-  Office, Mixed Office & Transitional
-  Multi-Family Residential
-  Single Family Residential, High Density
-  Single Family Residential, Low Density
-  Agriculture and 'Rural Residential'
-  Public Facilities, Quasi Public
-  Recreation, Open and Public Spaces
-  No Master Plan



This plot was generated for inclusion in the St. Clair County
MASTER PLAN - For county-wide reference only.
 No site-specific decisions should be inferred from these maps
 without independent verification of the information represented.

Sources:

The shoreline and rivers data were obtained from the Resource Mapping and Aerial Photography Section of the Land and Mineral Services Division of the Michigan Department of Natural Resources. (RMAP)

The composite master plan information is based on the master plan maps for each community within St. Clair County. There is no master plan for Burchville. The maps for Berlin, Columbus, Cottrellville, East China, and Memphis were digitized from hard copy maps provided by St. Clair County. The remaining maps were obtained in digital form from SEMCOG on December 7, 1998. The Agriculture and Residential areas were classified into four generalized categories based on the names assigned to each area. It was assumed that the meaning of the name indicated the intended use for that area. Where the area name was insufficient to assign a generalized single family residential category, the densities allowed in the current zoning ordinance were used as a guide. Generalized categories for the remaining areas were taken directly from the codes assigned to the SEMCOG map files. Code 19 (mostly parks and recreation) and code 20 (mostly open space and natural areas) were combined. Codes 4, 8, and 12 (together totaling less than 1000 acres) were combined into a single 'office, mixed office, and transitional category. Code 6 (industrial, manufacturing) and code 9 (commercial, light manufacturing - less than 400 acres) were also combined.